

# We are the Change Makers.



## DEPARTMENT OF SOCIAL WORK



### OVERVIEW

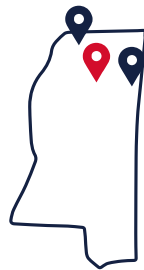
Social workers are committed to relieving suffering, affecting social change, and enabling people to overcome obstacles and lead productive lives. They practice in a variety of settings, helping individuals, families, groups, and communities to resolve problems. The program prepares students for both beginning practice *and* for graduate school. For those going on to graduate school, it is often possible to enter a one-year accelerated master's program.

**100%** **Pass rate** for M.S.W. state licensure **Increase** in full-time M.S.W. students

**14:1** **Low student-to-faculty ratio** allows for more individual attention.

**Job outlook** projected to grow 15% from 2016-2026, much faster than average.

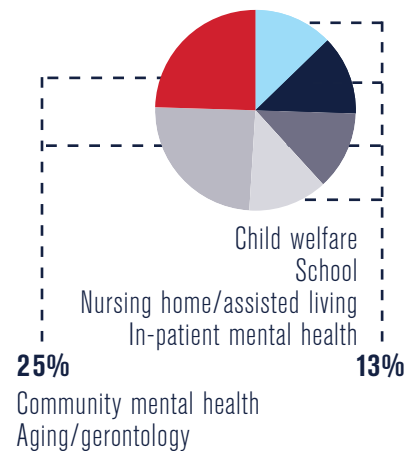
### 2018-19 SNAPSHOT



**3 CAMPUSES**  
**269 ENROLLED STUDENTS**  
 92% Female  
 46% From historically underrepresented groups  
**127 DEGREES AWARDED**

**B.S.W. | M.S.W | P.H.D**

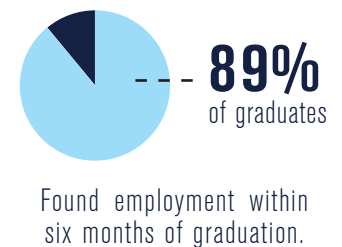
### 2016 EMPLOYMENT SURVEY



### CAREERS

Social workers are needed in a variety of educational, health care, government agency, community, and private practice settings:

- |                               |                              |                                   |
|-------------------------------|------------------------------|-----------------------------------|
| Child protective services     | Public health services       | Psychiatric hospital social work  |
| Foster care/adoption services | Substance abuse services     | Therapeutic group home services   |
| Family preservation services  | Corrections services         | Developmentally disabled services |
| Hospital social services      | Youth court services         | School social work                |
| Home health care              | Gerontology services         | Community mental health practice  |
| Specialized medical settings  | Gero-psychiatric social work | Medical social work in clinics    |



[ Where human **science** and **service** intersect ]

**Department of Social Work**  
 212 Longstreet Hall  
 University, MS 38677-1848

(662) 915-7336  
 socialwork@olemiss.edu  
 sw.olemiss.edu